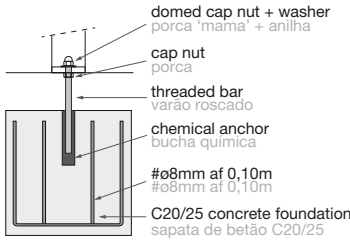
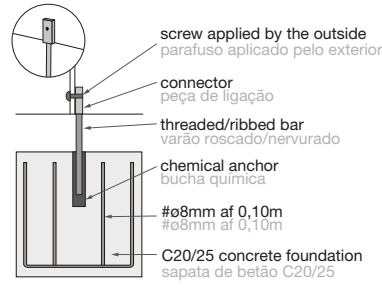
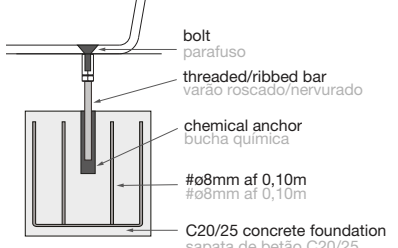
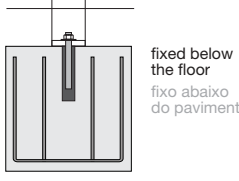
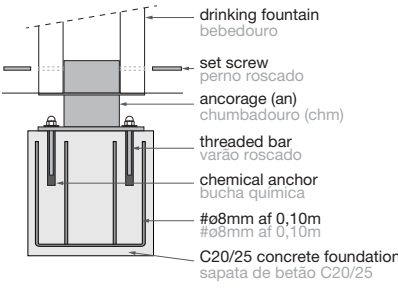


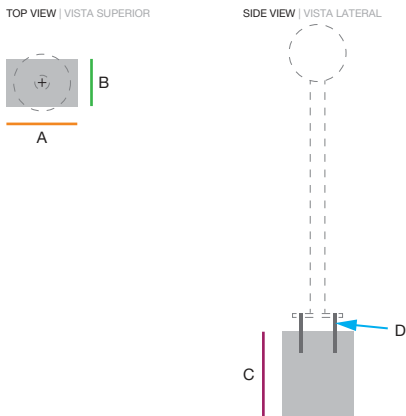
FIXING SYSTEMS | SISTEMAS DE FIXAÇÃO

<p>LF1.1 rods anchored on the floor/concrete foundation with chemical anchor varões chumbados no pavimento/ fundação de betão com bucha química</p> 	<p>LF1.2</p> 	<p>LF1.3</p> 
<p>LF1.4</p> 	<p>LF1.5</p> 	

FOUNDATION DIAGRAMS | DIAGRAMAS DE FUNDAÇÕES



FOUNDATION DETAILS | DETALHES DE FUNDAÇÕES



			A	B	C	D	E	F	notes notas
	fixing system sistema fixação	foundation diagram diagrama fundações							
17°_light pole (standard) 17°_coluna (standard)	LF1.4	1	400	400	700	4x M14 (500mm)	-	-	flange 12cm below ground flange 12cm abaixo do solo
17°_light pole _ surface mount 17°_coluna _ instalação à superfície	LF1.1	1	400	400	700	4x M14 (500mm)	-	-	-
Alta_light pole Alta_coluna	LF1.1	1	400	400	600	4x M14 (500mm)	-	-	distância ø =200mm ø distance = 200mm
Gemini_pole with two lighting points 8000 Gemini_coluna com dois pontos de luz 8000	LF1.1	1	600	600	900	4x M20	-	-	-
Gemini_pole with two lighting points 6000 Gemini_coluna com dois pontos de luz 6000	LF1.1	1	500	500	800	4x M20	-	-	-
Gemini_pole with one lighting point 8000 Gemini_coluna com um ponto de luz 8000	LF1.1	1	600	600	900	4x M20	-	-	-
Gemini_pole with one lighting point 6000 Gemini_coluna com um ponto de luz 6000	LF1.1	1	500	500	800	4x M20	-	-	-
Gemini_pergola Gemini_pergola	LF1.1	1*	500	500	500	4x M14	-	-	*per pole *por poste
Jasmine_light pole Jasmine_coluna	LF1.1	1	400	400	600	4x M14	-	-	-
Leaf_light pole Leaf_coluna	LF1.1	1	400	400	700	4x M14	-	-	-
Mondrian_light pole Mondrian_coluna	LF1.1	1	400	400	700	4x M14	-	-	-
Orion_light pole Orion_coluna	LF1.1	1	1100	500	500	4x M20	-	-	-
Promontório_light pole Promontório_coluna	LF1.1	1	400	400	600	4x M14	-	-	-
Solar_light pole Solar_coluna	LF1.1	1	400	400	700	4x M16 (430mm)	-	-	distância ø =200mm ø distance = 200mm
Ufo_light pole Ufo_coluna	LF1.1	1	700	700	900	4x M12	-	-	-